

of the surgical block, access to one of its principal doors being gained from the lift, or the "hoist," as it is called in Scotland.

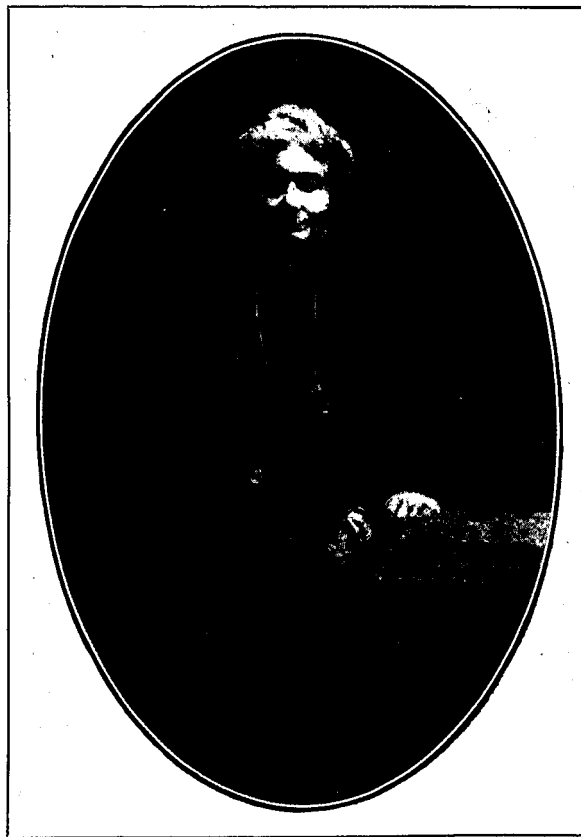
By the hoist also one descends to the subterranean passages, through which communication can be obtained between different parts of the Infirmary, and which are wide enough to be utilized for the passage of quite large trolleys. Here also one sees exposed the great pipes connecting the power house with various parts of the building, and other necessary mechanism.

Adjoining the East Wing of the new North Block is the old building of the Nurses' Home, and, continuous with this, the large new Extension, the two together providing the accommodation necessary for the large staff of over 200 nurses.

Each nurse has a separate and comfortably furnished room, hot and cold water being laid on in the rooms in the new extension. Some of the members of the nursing staff have been there for a number of years, the *doyenne* being Miss Bell with 48 years to her credit, who worked in Lord Lister's wards when he was on the staff of the Infirmary. Miss Bell, whose portrait appears on this page, is now one of the staff in the Nurses' Home, part of her duty being to look after sick nurses. What tales of bygone days they must coax from their nurse, and how much, if they are observant, they must learn from her wealth of practical experience.

One could go on for long telling of the model laundry, under the supervision of a Sister, where all the methods are most up-to-date; of the great machine through which wet sheets are passed to come out aired at the other end; of the mortuary, with its ice chamber, so that in

the hottest summer weather bodies can be kept indefinitely; of the pathological department, with its fine tessellated central hall, opened not long since by Sir William Osler, in which the specimens on the ground floor, many most interesting and beautiful, are screened by green blinds; and much more besides, but space fails. Readers of this journal do not need to be told that it was in connection with the Royal Infirmary, Glasgow, that the first Preliminary Training School was founded during the Matronship of Mrs. Strong. M. B.



MISS BELL.
FOR 48 YEARS A NURSE AT THE
ROYAL INFIRMARY, GLASGOW.

A new branch of the National Union of Trained Nurses has just been started under a very strong professional committee, consisting of Miss Herbert, Matron of the General Infirmary, Worcester, Miss Murphy, Lady Superintendent of the Worcester City and County Nursing Association, Sister Oldham, Sister Kerlake, Mrs. Bunting (late Night Sister, Charing Cross Hospital), Hon. Branch Treasurer, and Miss Stevenson, Assistant Lady Superintendent, Worcester City and County Nursing Association, Hon. Branch Secretary. Lady Hindlip is President, and the membership is already very large

for so young a branch. It is hoped to hold an inaugural meeting shortly.

Serious allegations were made against the nursing staff of the fever hospital of Strabane Workhouse at a recent meeting in reference to the manner in which the work of the institution was carried on, and the Board of Guardians, after a lengthened discussion on the matter, decided to suspend the staff pending a Local Government Board inquiry.

[previous page](#)

[next page](#)